



63 DENISON CLOSE

LONDON, N2 0JU

£2,000 PER MONTH

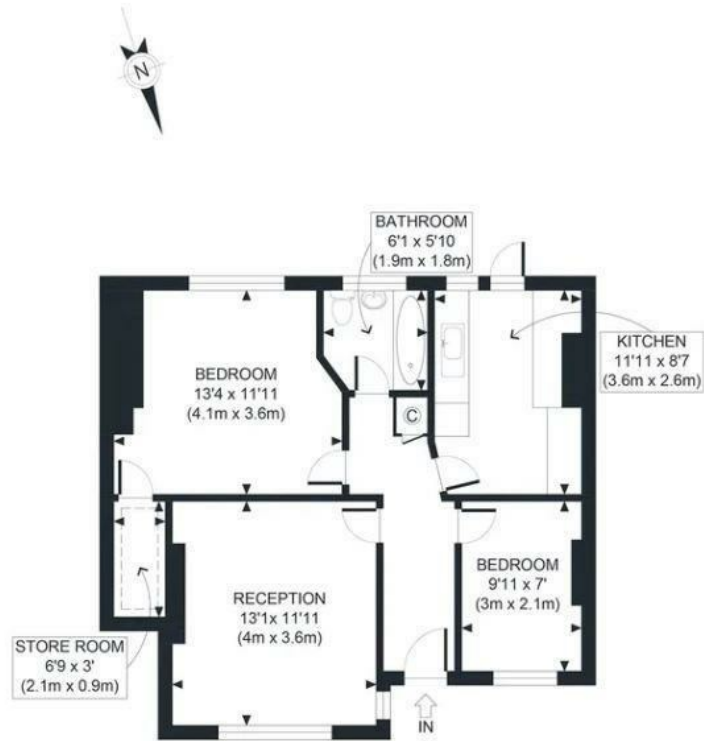
Elegant Two-Bedroom Apartment | Denison Close, N2 | £2,000 PCM

A beautifully presented and well-proportioned two double bedroom apartment, set on the first floor of a sought-after purpose-built development in the heart of N2.

This stylish home offers a perfect balance of comfort and practicality, featuring a bright and spacious reception room, a separate fully fitted kitchen, two generous double bedrooms, and a contemporary family bathroom.

Finished with attractive wooden flooring and benefiting from access to well-maintained communal gardens, this property is ideal for professionals, couples, or small families seeking a peaceful yet

david harris & co



GROUND FLOOR
 GROSS INTERNAL
 FLOOR AREA 635 SQ FT

APPROX. GROSS INTERNAL FLOOR AREA 635 SQ FT / 59 SQM



Energy Efficiency Rating		Current	Potential
Very energy efficient - lower running costs			
(92 plus) A			
(81-91) B			
(69-80) C			78
(55-68) D	66		
(39-54) E			
(21-38) F			
(1-20) G			
Not energy efficient - higher running costs			
England & Wales		EU Directive 2002/91/EC	

Agents Note: Whilst every care has been taken to prepare these particulars, they are for guidance purposes only. All measurements are approximate and are for general guidance purposes only and whilst every care has been taken to ensure their accuracy, they should not be relied upon and potential buyers/tenants are advised to recheck the measurements

Finchley Lettings
 358 Regents Park Road
 Finchley
 London
 N3 2LJ

020 8346 9122
 info@davidharris.co.uk
 www.davidharris.co.uk

david harris & co